

NEW SERIES OF SOUTHERN RAILWAY PACIFIC LOCOMOTIVES

General Steam Navigation

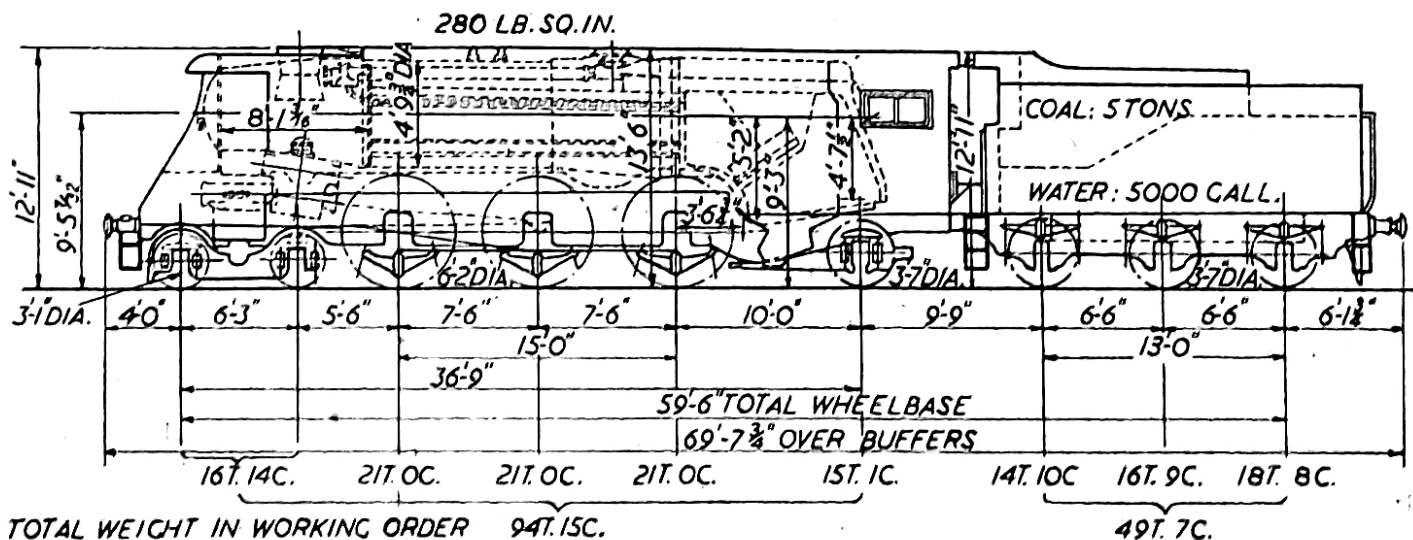
NAMING CEREMONY AT WATERLOO

THE Southern Railway has now completed at Eastleigh four of a second series of ten 4-6-2 mixed traffic locomotives of the "Merchant Navy" class and the first of these engines, No. 21 C 11, was named *General Steam Navigation* in a ceremony at Waterloo Station on February 20. The naming was carried out by Mr. Robert Kelso, chairman and managing director of the General Steam Navigation Co., Limited, and president of the Institute of Transport, who was introduced by Colonel Eric Gore-Browne, D.S.O., chairman of the Southern Railway.

Colonel Gore-Browne said that the "Merchant

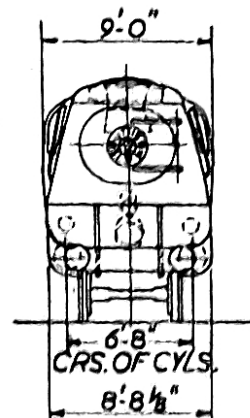
Mr. O. V. Bulleid, chief mechanical engineer, and Sir Eustace, as a memento of the occasion.

The new engines of the class incorporate modifications to the air scoop design at the front end with a view to improving the lifting of smoke and exhaust steam. The casing forward of the smokebox door acts as an air collector. The large opening over the smokebox door forms the mouth of a tunnel collecting the air, and discharges it at the sides of the chimney. To prevent the smoke and steam being drawn down along the sides of the smokebox and the boiler barrel, side screens are fitted alongside the smokebox, which neutralise the



LEADING DIMENSIONS

Cylinders (3)	18 by 24 in.	Tubes (124), diameter	2 1/2 in.
Valves:		Flues (40), diameter	5 1/2 in.
Diameter	11 in.	Total evaporative heating surface	2,451 sq. ft.
Max. travel	6 1/2 in.	Superheat heating surface	322 sq. ft.
Grate area	48.5 sq. ft.	Total combined heating surface	3,273 sq. ft.
Firebox volume	300 cu. ft.	Tractive effort at 85 per cent. boiler pressure	37,500 lb.
Boiler barrel:			
Max. diameter	6 ft. 3 1/2 in.		
Distance between tube plates	17 ft.		



General arrangement of new series of Southern Railway "Merchant Navy" class Pacific locomotives, showing new air scoop at front end